



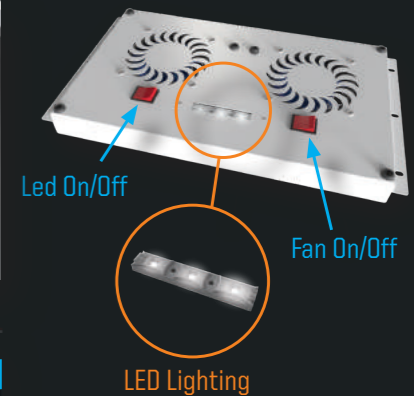
# IP55

## WALL TYPE & GROUND TYPE CABINETS



### FAN SYSTEM

Both fans of the 2 fans unit located on top of the upper section discharges towards outside. The cabinet sucks the air from the protected clean air vent on the right side and discharges it from the ventilation slots on the roof. LED lightings are designed to be integrated on the IP fan modules.



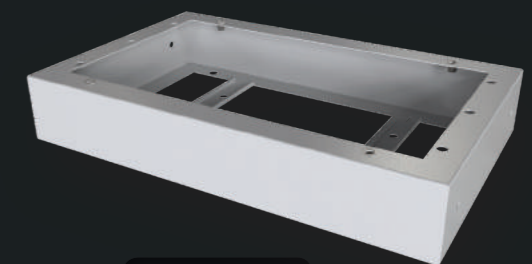
Fan Modules		LED Lighting	
Product Code	Product Description	Product Code	Product Description
MR.FAN1.IP.03	IP 1 fan, analog thermostat controlled fan module	MR.AYM.IP.220V	3 chips LED lighting module with door switch (220V)
MR.FAN2.IP.03	IP 2 fans, analog thermostat controlled fan module	MR.AYM.IP.12V	3 chips LED lighting module with door switch (12V)

### PLINTH MODULE

H=100mm high plinth module enables the protection of the cable masses coming from the bottom. It protects the cabinet from floods. Plinth modules are designed to fit for all series of IP54, IP55, IP65 and IP66.

Product Code	Product Description
MR.BZ601040.03	IP W=600 D=400 H=100 Plinth Module
MR.BZ601045.03	IP W=600 D=450 H=100 Plinth Module
MR.BZ601060.03	IP W=600 D=600 H=100 Plinth Module

IP plinth modules are included in the prices of IP66 models only.



IP Plinth Module



IP54 with Plinth



IP55 with Plinth



IP66 with Plinth





## HINGED ROOF SYSTEM

It presents mechanically lockable by 2 wing screws inside the hinged roof system enabling easy intervention to the fan modules from the top.



## VENTILATION

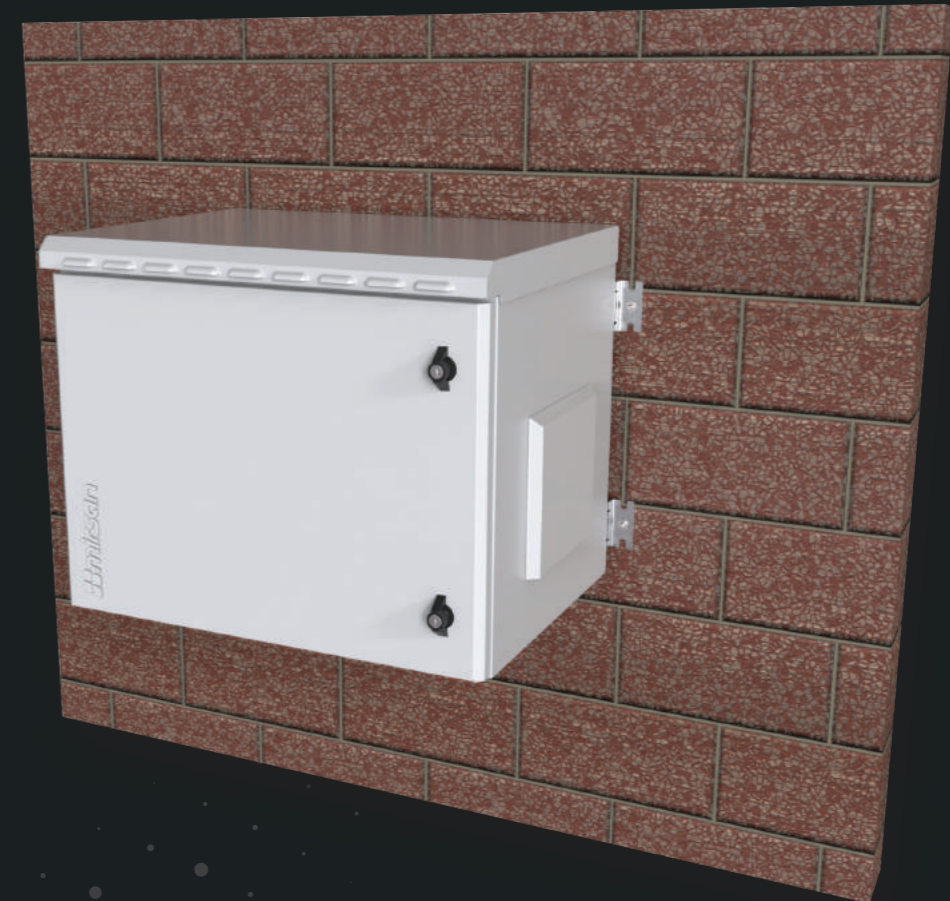
With the aid of the metal protected filtering system at the right and left of the cabinet, it enables passive ventilation and discharging of the hot air through the louvers on the roof.

## SEALING

By means of gaskets on the roof and on the door, it is sealed against dust and water.

## WALL MOUNTING

By means of wall mounting lugs, the cabinet can be mounted on the wall easily.



## 19" STRUCTURE

On a set of 19", 2 device installation rails, all types of 19" devices and equipments may be attached. One pair of 19" rails are used in 600x450 cabinets while two pairs are used for 600x600 cabinets.

## LOCK SYSTEM

In standard applications butterfly lock, optional three point locking or mechanism handle lock are available. Lock systems provide full protection against dust, water and external impacts.



## INTENSE CABLE INLET

Thanks to a PG48 IP cable gland, 2 pcs PG21 IP cable glands and 3 pcs 28 mm diameter PVC blind flanges at the bottom of the cabinet, it enables intense cable inlets from the bottom.





# IP55 7U FIELD CABINET



## Standard and Optional Accessories

- 1x Butterfly Lock
- 1x PG36 Gland
- 1x Fan Module
- 1x Thermostat
- 1x Lighting
- 1x Handle Lock
- 1x WK2 Lockt
- 1x Switch



## Technical Drawing



## Technical Specifications

Product Code	7U IP55 Ground & Pole Type Field Cabinets						Logistics		
	Size	Type	Width W	Depth D	Height H	Net Weight (kg)	Width	Depth	Height
MR.IP55W07U45	7U	Wall Type	600 mm	450 mm	405 mm	22.0 kg	620 mm	470 mm	425 mm
MR.IP55D07U45	7U	Pole Type	600 mm	450 mm	405 mm	22.0 kg	620 mm	470 mm	425 mm
MR.IP55Y07U45	7U	Ground Type	600 mm	450 mm	505 mm	29.5 kg	620 mm	470 mm	525 mm
MR.IP55W07U60	7U	Wall Type	600 mm	600 mm	405 mm	27.3 kg	620 mm	620 mm	425 mm
MR.IP55Y07U60	7U	Ground Type	600 mm	600 mm	505 mm	31.8 kg	620 mm	620 mm	525 mm

**Note:** 100mm Plinth height is included in the given dimensions of IP66 Ground Type Cabinets.

*Fill in the*  
**RACKS**



**Standard and Optional Accessories**

- 1x Butterfly Lock
  - 1x PG36 Gland
  - 1x Fan Module
  - 1x Thermostat
  - 1x Lightingt
  - 1x Handle Lock
  - 1x WK2 Lock
  - 1x Switch
- Standard

Standard

Optional

Optional

Optional

Optional

Optional

Optional

**Technical Specifications**

Product Code	9U IP55 Ground & Pole Type Field Cabinets						Logistics		
	Size	Type	Width W	Depth D	Height H	Net Weight (kg)	Width	Depth	Height
MR.IP55W09U45	9U	Wall Type	600 mm	450 mm	495 mm	22.9 kg	620 mm	470 mm	515 mm
MR.IP55D09U45	9U	Pole Type	600 mm	450 mm	495 mm	22.9 kg	620 mm	470 mm	515 mm
MR.IP55Y09U45	9U	Ground Type	600 mm	450 mm	595 mm	32.0 kg	620 mm	470 mm	615 mm
MR.IP55W09U60	9U	Wall Type	600 mm	600 mm	495 mm	30.0 kg	620 mm	620 mm	515 mm
MR.IP55Y09U60	9U	Ground Type	600 mm	600 mm	595 mm	36.5 kg	620 mm	620 mm	615 mm

**Technical Drawing**



**Note:** 100mm Plinth height is included in the given dimensions of IP66 Ground Type Cabinets.



# IP55 12U FIELD CABINET



## Standard and Optional Accessories

- 1x Butterfly Lock
  - 1x PG36 Gland
  - 1x Fan Module
  - 1x Thermostat
  - 1x Lighting
  - 1x Handle Lock
  - 1x WK2 Lock
  - 1x Switch
- Standard

Standard

Optional

Optional

Optional

Optional

Optional

Optional

## Technical Specifications

Product Code	12U IP55 Ground & Pole Type Field Cabinets						Logistics		
	Size	Type	Width W	Depth D	Height H	Net Weight (kg)	Width	Depth	Height
MR.IP55W012U45	12U	Wall Type	600 mm	450 mm	625 mm	28.0 kg	620 mm	470 mm	645 mm
MR.IP55O012U45	12U	Pole Type	600 mm	450 mm	625 mm	28.0 kg	620 mm	470 mm	645 mm
MR.IP55Y012U45	12U	Ground Type	600 mm	450 mm	725 mm	34.5 kg	620 mm	470 mm	745 mm
MR.IP55W012U60	12U	Wall Type	600 mm	600 mm	625 mm	32.0 kg	620 mm	620 mm	645 mm
MR.IP55Y012U60	12U	Ground Type	600 mm	600 mm	725 mm	38.0 kg	620 mm	620 mm	745 mm

**Note:** 100mm Plinth height is included in the given dimensions of IP66 Ground Type Cabinets.

## Technical Drawing





# IP55 16U FIELD CABINET



## Standard and Optional Accessories

- 1x Butterfly Lock  Standard
- 1x PG36 Gland  Standard
- 1x Fan Module  Optional
- 1x Termostat  Optional
- 1x Lighting  Optional
- 1x Handle Lock  Optional
- 1x WK2 Lock  Optional
- 1x Switch  Optional

## Technical Drawing



## Technical Specifications

Product Code	16U IP55 Ground & Pole Type Field Cabinets						Logistics		
	Size	Type	Width W	Depth D	Height H	Net Weight (kg)	Width	Depth	Height
MR.IP55W016U45	16U	Wall Type	600 mm	450 mm	805 mm	30.9 kg	620 mm	470 mm	825 mm
MR.IP55D016U45	16U	Pole Type	600 mm	450 mm	805 mm	30.9 kg	620 mm	470 mm	825 mm
MR.IP55Y016U45	16U	Ground Type	600 mm	450 mm	905 mm	36.5 kg	620 mm	470 mm	925 mm
MR.IP55W016U60	16U	Wall Type	600 mm	600 mm	805 mm	34.0 kg	620 mm	620 mm	535 mm
MR.IP55Y016U60	16U	Ground Type	600 mm	600 mm	905 mm	40.1 kg	620 mm	620 mm	925 mm

**Note:** 100mm Plinth height is included in the given dimensions of IP66 Ground Type Cabinets.



# IP55 20U FIELD CABINET



## Standard and Optional Accessories

- 1x Butterfly Lock
- 1x PG36 Gland
- 1x Fan Module
- 1x Thermostat
- 1x Lighting
- 1x Handle Lock
- 1x WK2 Lock
- 1x Switch



## Technical Specifications

Product Code	20U IP55 Ground & Pole Type Field Cabinets						Logistics		
	Size	Type	Width W	Depth D	Height H	Net Weight (kg)	Width	Depth	Height
MR.IP55W020U45	20U	Wall Type	600 mm	450 mm	980 mm	34.8 kg	620 mm	470 mm	1000 mm
MR.IP55D020U45	20U	Pole Type	600 mm	450 mm	980 mm	34.8 kg	620 mm	470 mm	1000 mm
MR.IP55Y020U45	20U	Ground Type	600 mm	450 mm	1080 mm	39.3 kg	620 mm	470 mm	1100 mm
MR.IP55W020U60	20U	Wall Type	600 mm	600 mm	980 mm	41.4 kg	620 mm	620 mm	1000 mm
MR.IP55Y020U60	20U	Ground Type	600 mm	600 mm	1080 mm	45.9 kg	620 mm	620 mm	1100 mm

## Technical Drawing



Note: 100mm Plinth height is included in the given dimensions of IP66 Ground Type Cabinets.